



PODHOUSE



At home outdoors.

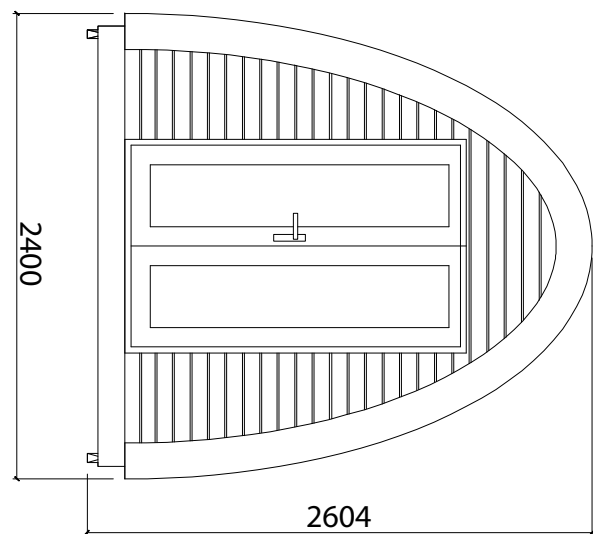
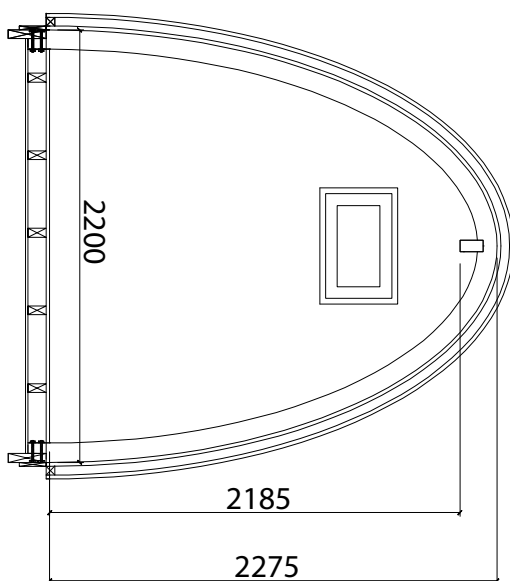
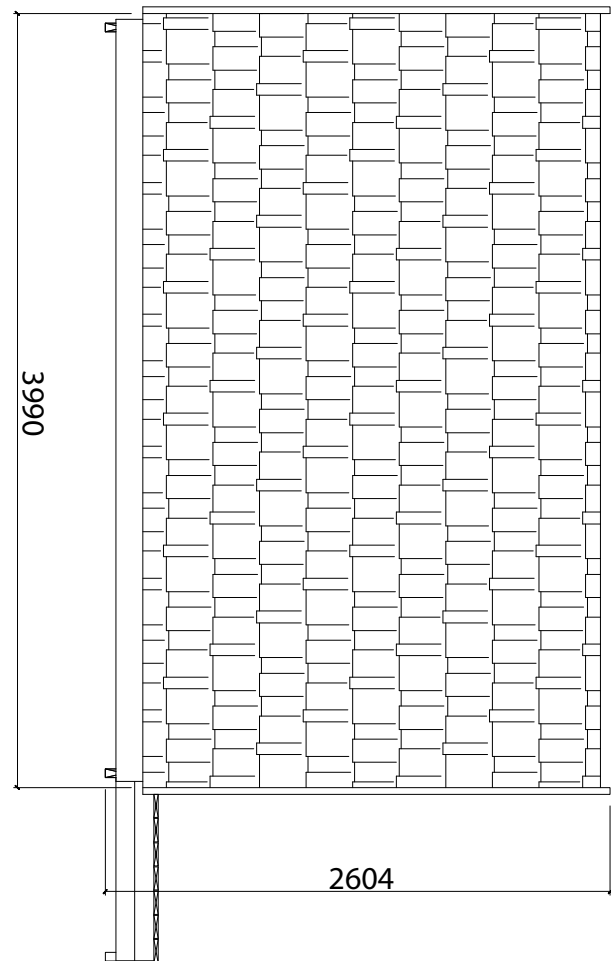
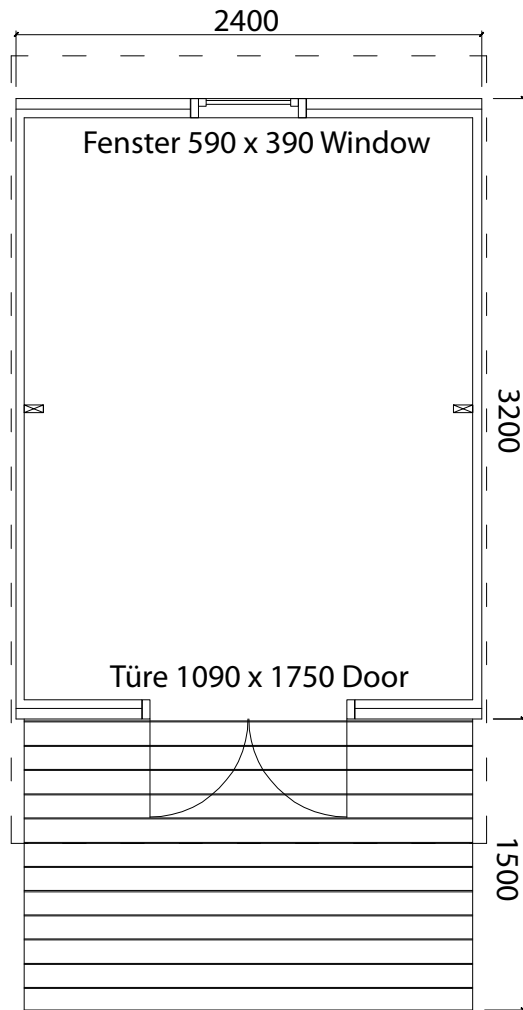


PODhouse MENHIR

MENHIR (Monolith, upright stone) uses the space of the round design in its length so that the sleeping area is directly facing the door. 'Step in and feel good' is the architect's message.

Similar to the monoliths over the past centuries, the PODhouse MENHIR also generates a peculiar magic. The round shapes of the construction meet above the heads of the sleepers and thus have a calming effect and create a good feeling of security.

PODhouse MENHIR 6,8m²



Each PODhouse is unique and handcrafted. All measurements can vary slightly.

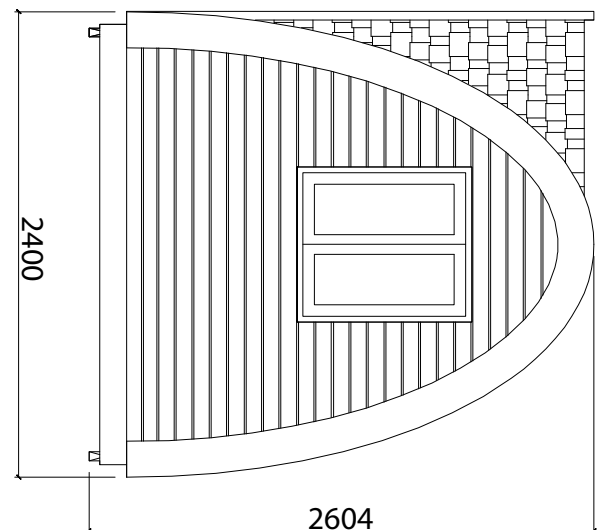
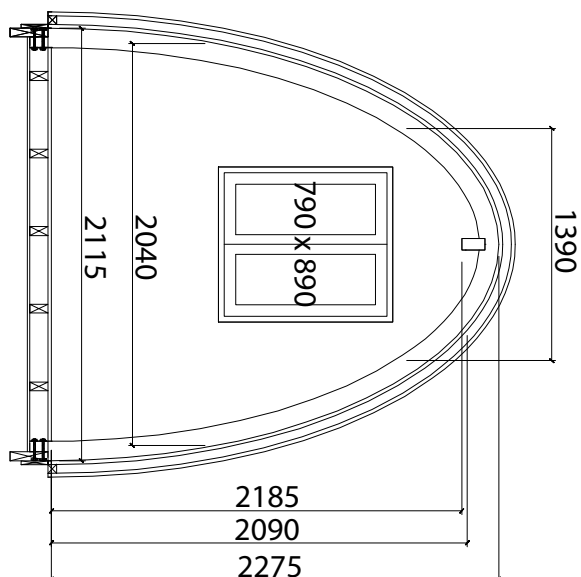
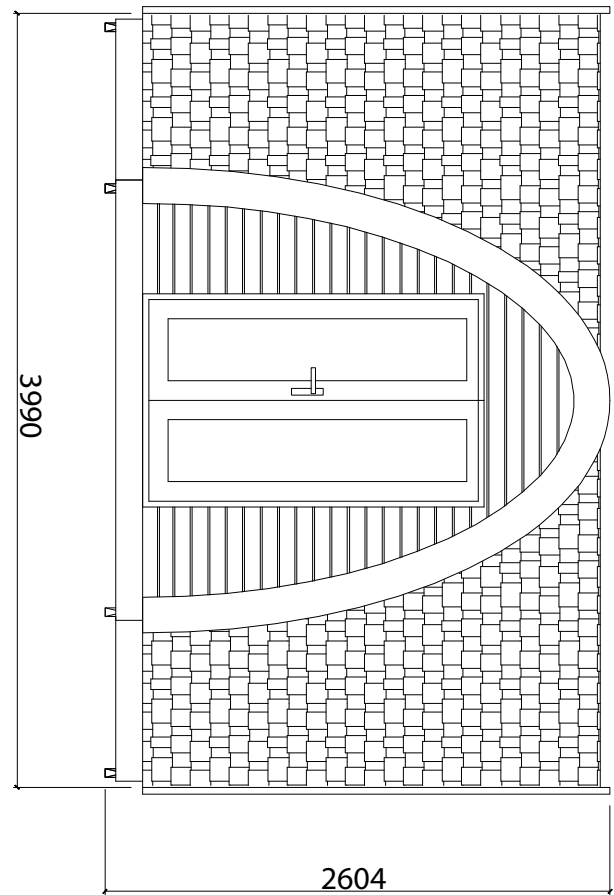
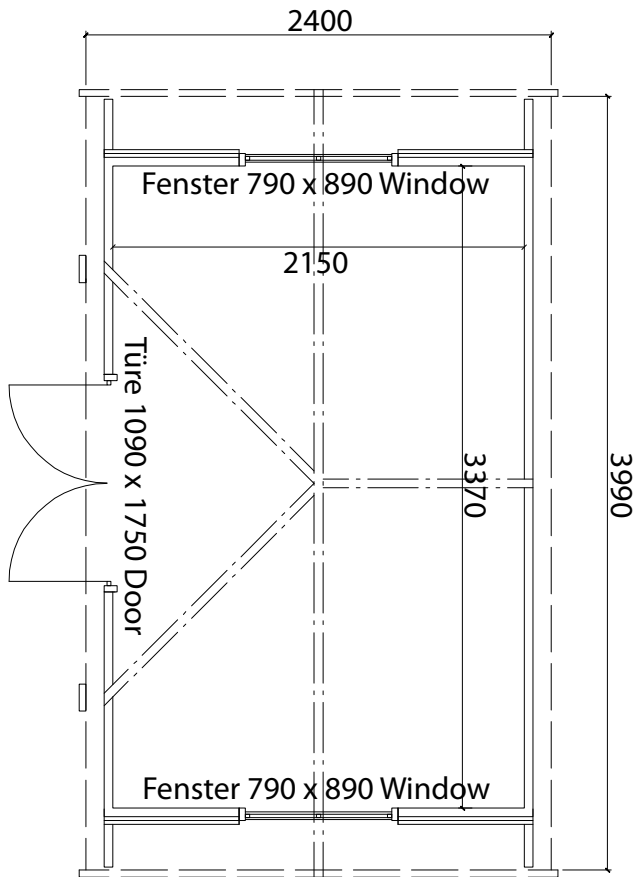


PODhouse CAUMA

CAUMA (sleeping place) offers **up to three sleeping places**. The simple design becomes a wooden area of security for its dwellers that they do not really want to leave anymore.

Two windows and the glass entrance door flood the interior with light during the day and by night you can experience completely new sensations by watching nature from your bed.

PODhouse CAUMA 7,2m²



Each PODhouse is unique and handcrafted. All measurements can vary slightly.



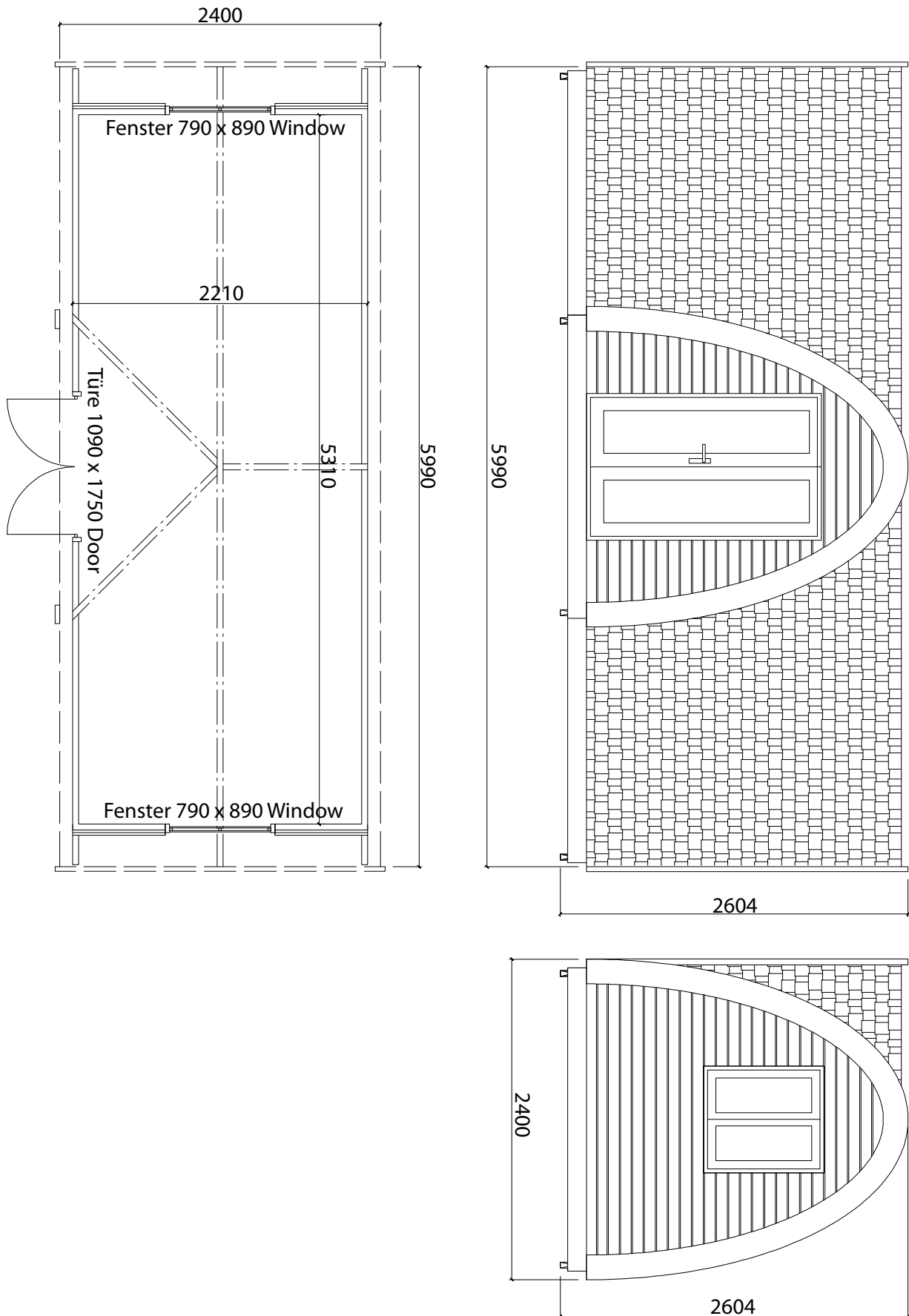
PODhouse PLAUN

The dual meaning of the largest PODhouse is also reflected in its name:

PLAUN (meaning: peaceful and: space) is the largest of the series but does not compromise in the least its unique, exclusive charm.

Due to the intelligent design of PLAUN, **up to four persons** find space in this PODhouse, also giving families the possibility to enjoy living close to nature.

PODhouse PLAUN 11.6m²



Each PODhouse is unique and handcrafted. All measurements can vary slightly.



PODhouse PORTAL

The **PORTAL** provides the ideal weather protection fitting the two PODhouses CAUMA and PLAUN.



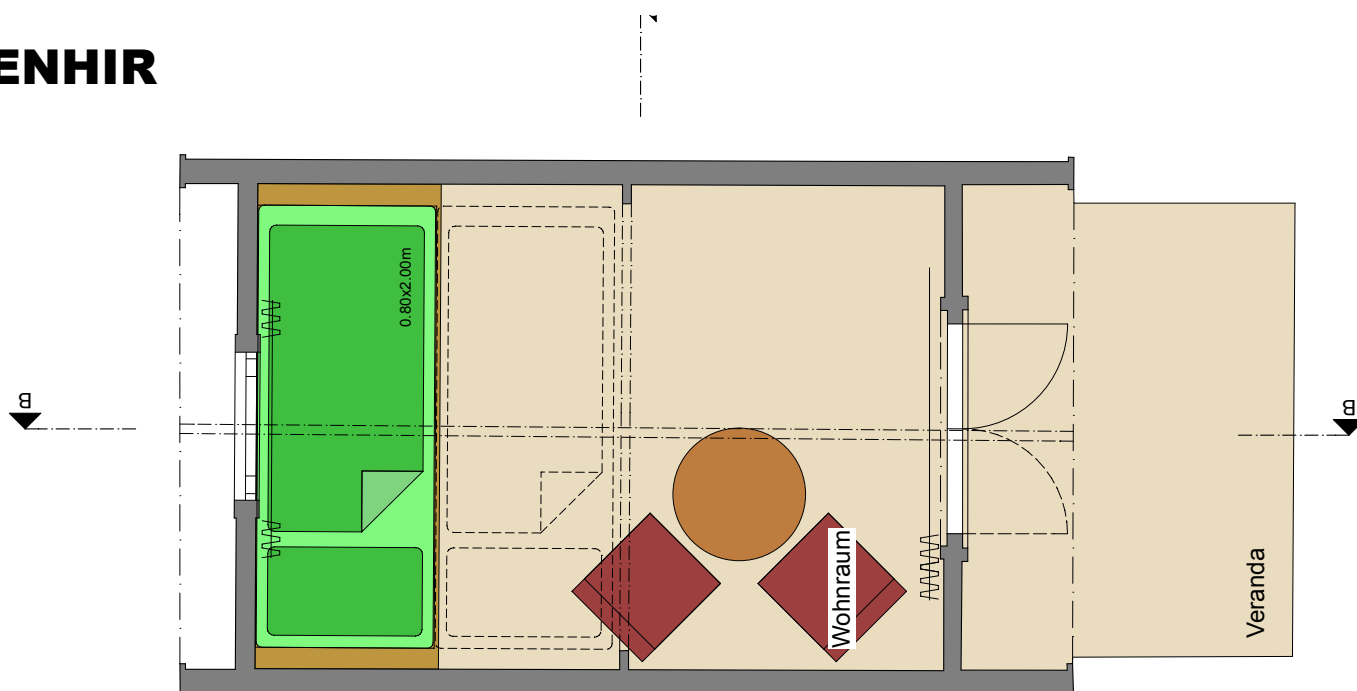
PODhouse interior

Quality and design inside and out.

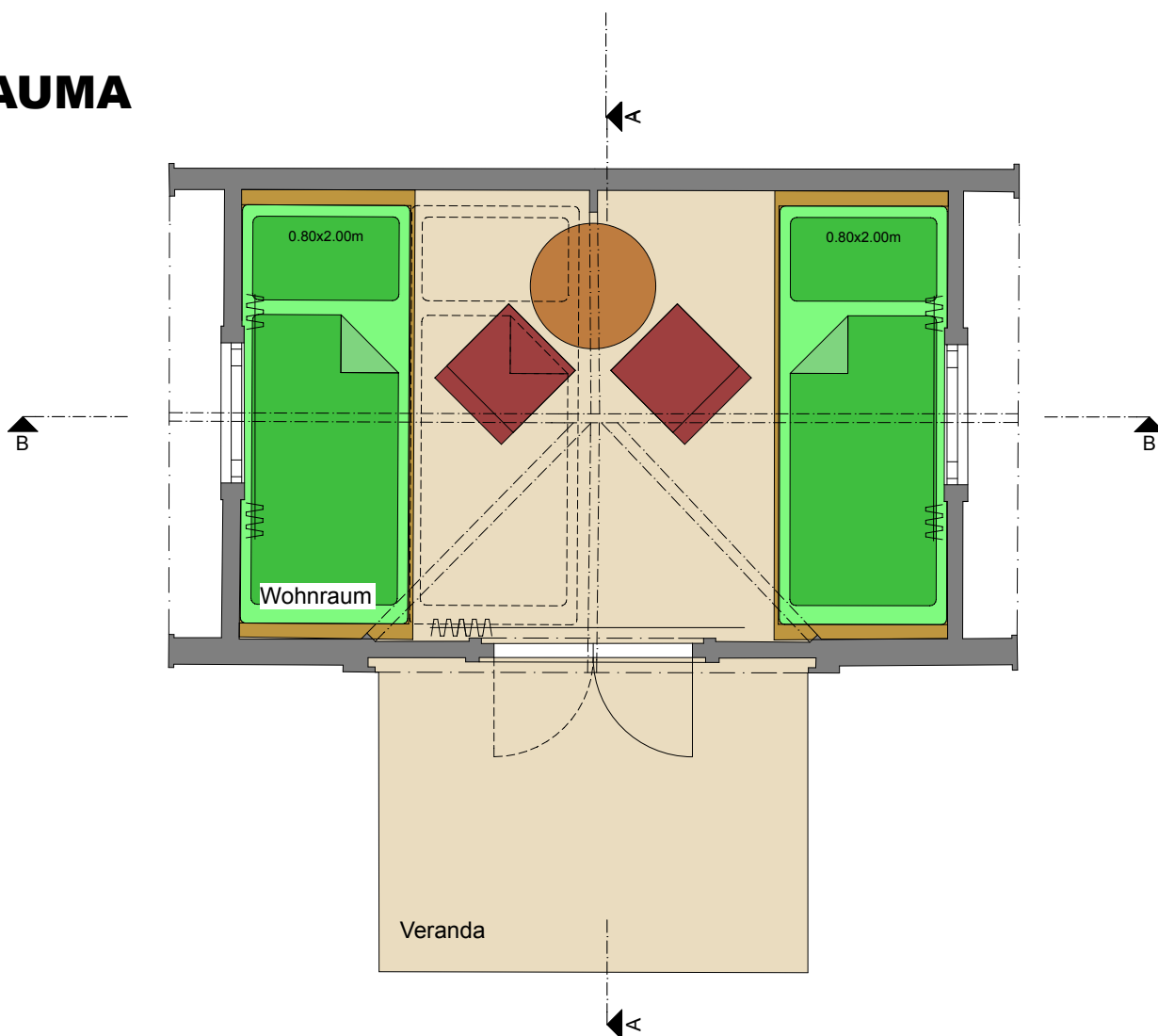
We also take care of the interior furnishings. We have developed furnishing proposals with the Zurich interior design agency Livingcase. Allow us to advise you.

Furnishing options

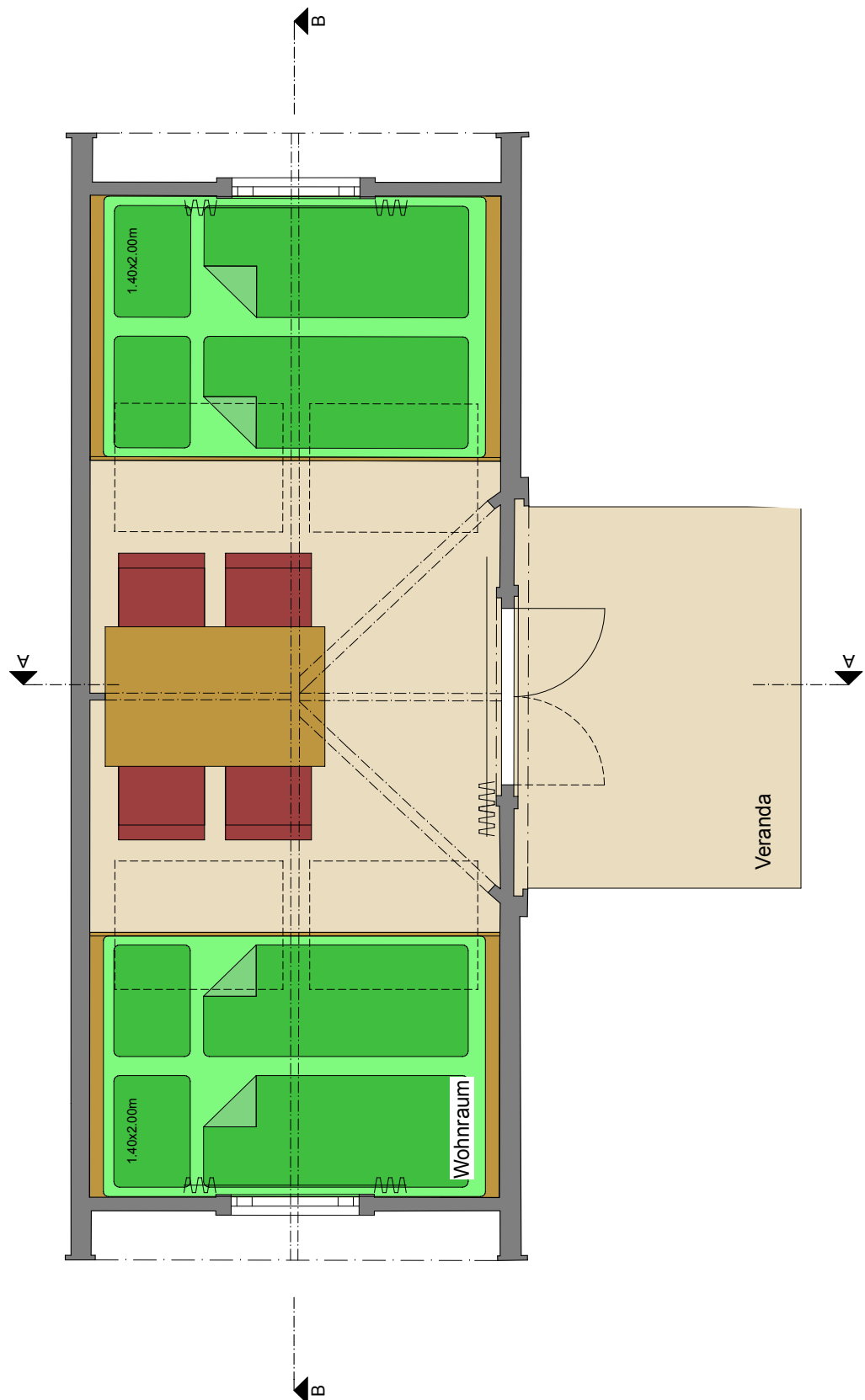
MENHIR



CAUMA



PLAUN



These furnishing options should be thought of as proposals. Please note that the respective equipment must be ordered separately.



PODhouse winter magic

The PODhouse offers you pure romance, comfort and safety also in winter. Thanks to its excellent insulation, it only takes a low heat load to make your stay in the PODhouse an unforgettable experience in snow and low temperatures.



The arched architecture withstands even large amounts of snow.



The PODhouses are delivered pre-assembled on a lorry. Thanks to the integrated steel rails, the PODhouses can be easily set down at the final site using a forklift with the necessary lifting load.

Questions and answers

Is a building permit needed?

In general yes. Please ask your local building authority.

What are the weights of the PODhouses?

MENHIR: 1'100 kg

CAUMA: 1'400 kg

PLAUN: 1'900 kg

PORTAL: 280 kg

What preparations for the placement of a PODhouse need to be made?

Plot preparation:

Ideally, stone slabs or concrete foundations are laid. Detailed foundation drawings are available.

Unloading arrangements:

The PODhouses are delivered on a lorry. A forklift with the necessary lifting load must be arranged locally.

Call for an electrician:

A licensed electrician on site must perform the connection to the local power grid.

How is the PORTAL delivered?

Because of the lorry width, the PORTAL cannot be delivered pre-assembled. The assembly is easy and a assembly manual is available.

How are the PODhouses furnished?

The PODhouses can also be ordered with interior furnishings. Speak to us to ensure an ideal furnishing of your PODhouse.

Impressions







Luxury in its simplicity.

That's our philosophy.

We combine highest quality, design and nature.